



FORMATION EVALUATION LOG

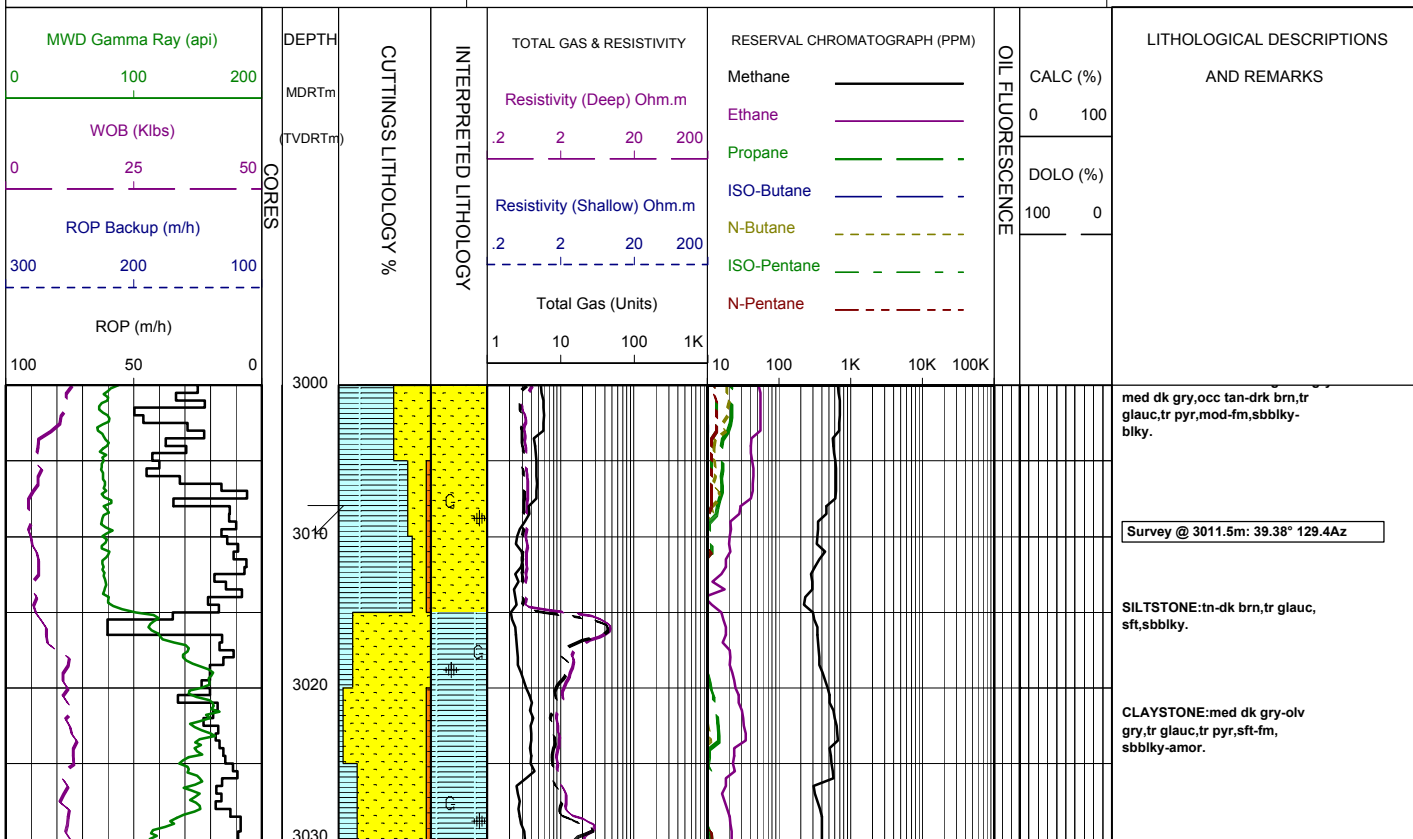


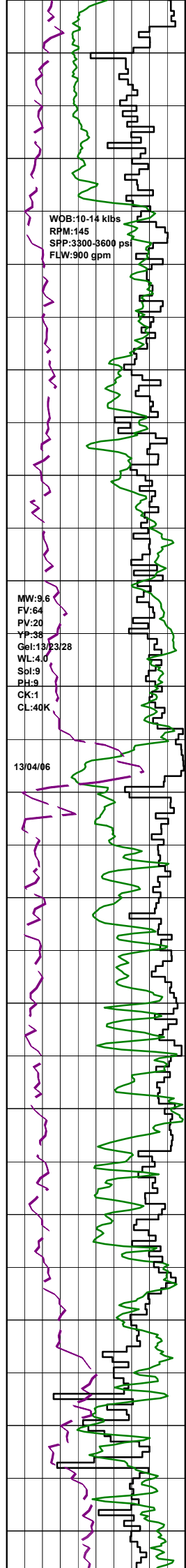
WELL : BASKER-3

FROM (m): 3000 TO (m): 4040 SCALE: 1/ 500

Country : AUSTRALIA	POSITION Latitude : 38°18'42.44"S Longitude : 148°43'29.78"E UTM Co-ord X (m E) : 650106.2 UTM Co-ord Y (m N) : 5761989.6 RT-LAT (m) : 21.5 RT-Seabed (m) : 174.4	HOLE / CASING INFO 17 1/2" Hole to (mMDRT) : 1112m 12 1/4" Hole to (mMDRT) : 3530m 13 3/8" Shoe at (mMDRT) : 1102.3m 9 5/8" Shoe at (mMDRT) : 3520m	Spud Date : 01-03-2006 Total Depth Date : xx-03-2006 Total Depth (mRT) : xxxxx T.V.D. (mSS MSL) : xxxxx Status : COMPLETED
---------------------	--	--	--

<p>ABBREVIATIONS</p> <p>MW MUD WEIGHT NB NEW BIT FV FUNNEL VISCOSITY RR RERUN BIT PV PLASTIC VISCOSITY CB CORE BIT YP YIELD POINT WOB WEIGHT ON BIT FC FILTER CAKE RPM REVS PER MINUTE SOL SOLIDS FLC FLOW CHECK WL FILTRATE CR CIRCULATE RETURNS SD SAND - % PR POOR RETURNS S SALINITY - PPM NR NO RETURNS RM MUD RESISTIVITY BG BACKGROUND GAS RMF MUD FILTRATE TG TRIP GAS C CARBIDE TEST STG SHORT TRIP GAS LAT LOGGED AFTER TRIP CG CONNECTION GAS DS DEVIATION SURVEY SG SWAB GAS SVG SURVEY GAS</p>	<p>LITHOLOGY LEGEND</p> <p>Claystone Siltstone ar. Silt ar Fine SST Medium SST Coarse SST Marl Clay, Limestone Limestone Dolomite Coal Gypsum Lithic Fragment Foraminifera Fossils Bryozoa Brachiopoda Cement Sponges Glauconite Pyrite Iron Minerals Mica Carb Fragments</p>	<p>ENGINEERING LEGEND</p> <p>Shoe FIT Mud loss Deviation survey DST Mud gain Test Sidewall Core Core RFT</p>
--	--	---

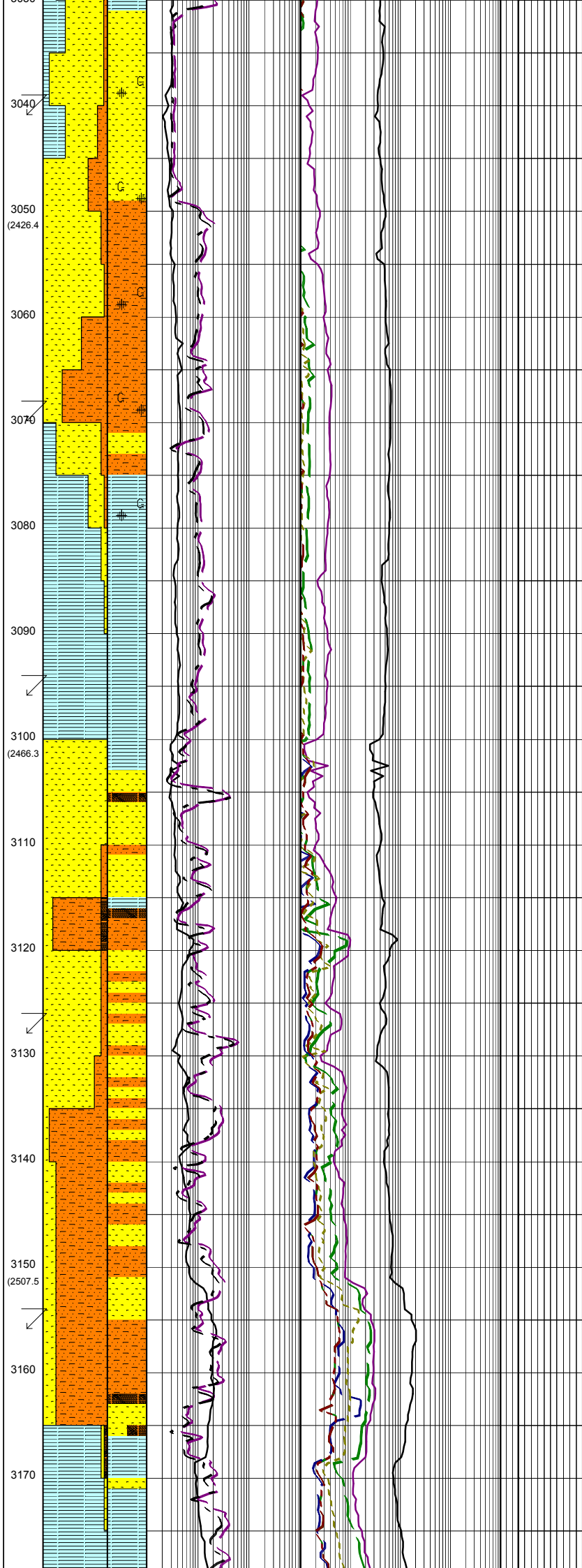




WOB:10-14 klbs
RPM:145
SPP:3300-3600 psi
FLW:900 gpm

MW:9.6
FV:64
PV:20
YP:38
Gel:13/23/28
WL:4.0
SpI:9
PH:9
CK:1
CL:40K

13/04/06



SURFACE:dk-olvgry,tan
f-med,occ crs,mod srt, tr glauc,
tr pyr,tr carb spk,lse,fr inf por,
no fluor.

Survey @ 3041.1m: 38.31° 129.4Az

SILTSTONE:dk-olv gry,tan
lt brn-brn gry,sil i/p,clay i/p, tr
glauc,try pyr,tr carb spk,tr micmic,
occ f sd gm,sft-fr, sbbiky-blky.

SANDSTONE:wh-trnsi-clr,
vf-med,occ crs,mod wl srt,sbang-
sbrnd,tr pyr,tr glauc,lse,fr inf
por,no fluor.

Survey @ 3069.8m: 37.19° 129.8Az

ARGILLACEOUS SILTSTONE:med-dk
gry,tr glauc,sft-fr,sbbiky-amor.

SILTSTONE:mott wh-dk brn,
tr glauc,tr pyr,fr,sbbiky-blky.

CLAYSTONE:med-med dk gry,dk
grn gry,glauc,sity i/p, tr carb spk,
vsft,occ fm,amor,occ sbbiky.

Survey @ 3099.1m: 35.76° 130.7Az

CLAYSTONE:med-med dk gry,dk
grn gry,glauc,sity i/p, tr carb spk,
tr pyr,occ f sd,vsft,occ fm,amor
occ sbbiky.

SANDSTONE:clr,tnsl,wh,pl grn,
dk gry,vf-med grn,rr crs,sbang-
sbrnd,mod srt, tr pyr cmt w/ glauc, tr
carb spk,sity i/p,lse,gd inf por,
no fluor.

COAL:blk,brn blk,dll-ea,brit,
tr fm,sbbiky,ang-uneven.

SANDSTONE:clr,tnsl,wh,pl grn,
dk gry,vf-med grn,com crs,sbang-
sbrnd,mod srt, tr pyr cmt w/ glauc, tr
carb spk,sity i/p,lse,gd inf por,
no fluor.

Survey @ 3127.2m: 34.78° 130.2Az

SILTSTONE:med dk gry-dk gry,
dk grn gry,com glauc,sity i/p,com
grd to ARGILLACEOUS SILTSTONE,
tr pyr,sft-fr,occ amor,sbbiky.

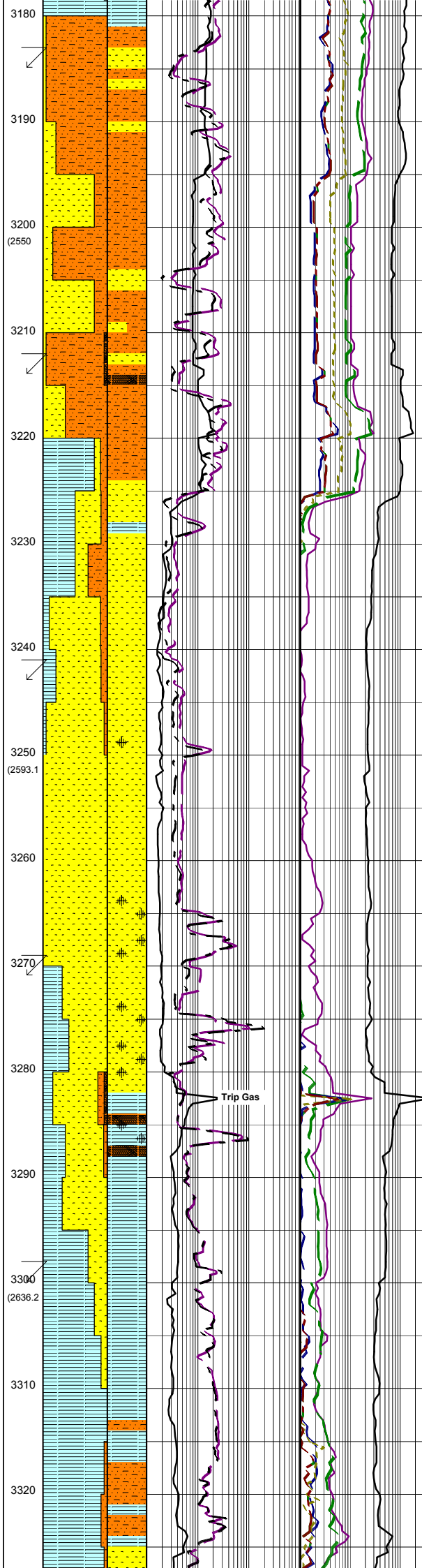
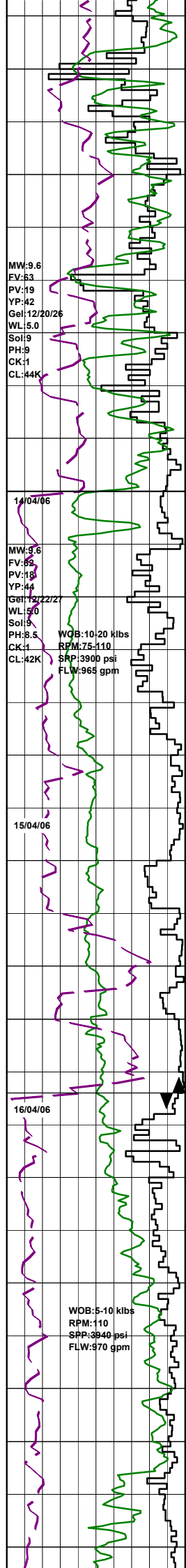
SANDSTONE:clr,tnsl,wh,pl grn,
dk gry,vf-med grn,com crs,sbang-
sbrnd,mod srt, tr pyr cmt w/ glauc, tr
carb spk,sity i/p,lse,gd inf por,
no fluor.

SILTSTONE:dk gry,lt olv gry,yelsh
brn,com glauc,clay i/p, tr C frag,com
grd to ARGILLACEOUS SILTSTONE,
tr pyr,sft-fr,occ amor,sbbiky.

Survey @ 3156.2m: 32.89° 130.5Az

CLAYSTONE:dk gry,lt olv gry,dk
grn gry, tr glauc,sity i/p, tr vf qtz grn,
com grd to SILTY CLAYSTONE, tr
pyr,sft,occ amor,sbbiky.

SILTY CLAYSTONE:lt-dk gry,
brnsh gry,mott wh, tr glauc, tr C,
vsft-sft,sbbiky-amor.



Survey @ 3185.3m: 31.01° 130.8Az

ARGILLACEOUS SILTSTONE: brnsh blk, med dk-dk gry, olv gry, tr glauc, vsft- fm, sbbiky-blky.

SANDSTONE: wh, clr-trnsl, f-crs, pr-mod srt, sbang-sbrnd, kaol mtx, sft, pr-fr inf por, no fluor.

SANDSTONE: trnsl-clr, vf-crs, mod srt, sbang-sbrnd, kaol mtx, tr pyr, sft, pr vis por, pr-fr inf por no fluor.

Survey @ 3214.2m: 30.14° 132.7Az

COAL: blk-brn blk, dll-ea, stly brit-fr, sbfiss-sbbiky, unevn-ang i/p.

ARGILLACEOUS SILTSTONE: med-dk gry, olv gry, brn gry occ tan, tr carb spk, sft-fm, sbbiky-amor.

POOH @ 3225m TO 2600m TO REPAIR THE TOP DRIVE

CLAYSTONE: med-med dk gry, dk grnsh gry, tr pyr, tr glauc, frm, sbbiky-blky.

SANDSTONE: clr-trnsl, occ orng, med-crs, mod srt, ang-sbang, lse, pr inf por, no fluor.

Survey @ 3242.1m: 30.76° 135.8Az

SILTSTONE: dk brn-brnsh gry, sft-fm, sbbiky-blky.

SANDSTONE: clr-trnsl, wh, dk gry, med-vcrs, pred crs, mod srt, sbang-ang, pyr cmt, tr glauc, tr sil cmt, lse, tr fr-gd inf por, no fluor.

SANDSTONE: clr-trnsl, wh, dk gry, dom crs grn, r med, mod srt, ang-sbang, com pyr, tr glauc, tr sil cmt, lse, gd inf por, no fluor.

Survey @ 3271.1m: 30.42° 135.6Az

CLAYSTONE: olv gry, dk gry, grnsh gry, tr calc, tr glauc, stly i/p, tr carb spk, frm-hd, r vhd, sbbiky-blky, tr splty.

COAL: blk-brn blk, dll-ea, stly brit-fr, sbfiss-sbbiky, unevn-ang i/p.

BIT #6: Hycalog RSX616M-A9
SIZE: 311mm 12.25"
JETS: 4x18, 2x20
IN: 3282m OUT: 3530m
RUN: 248m HRS: 26.4
COND: 0-2-WT-S-X-IN-PN-TD

SANDSTONE: clr-trnsl, occ grn, f-med, wl srt, sbang-sbrnd, tr glauc, tr pyr, tr mic foss, lse, fr inf por, no fluor.

Survey @ 3299.9m: 29.99° 135.23Az

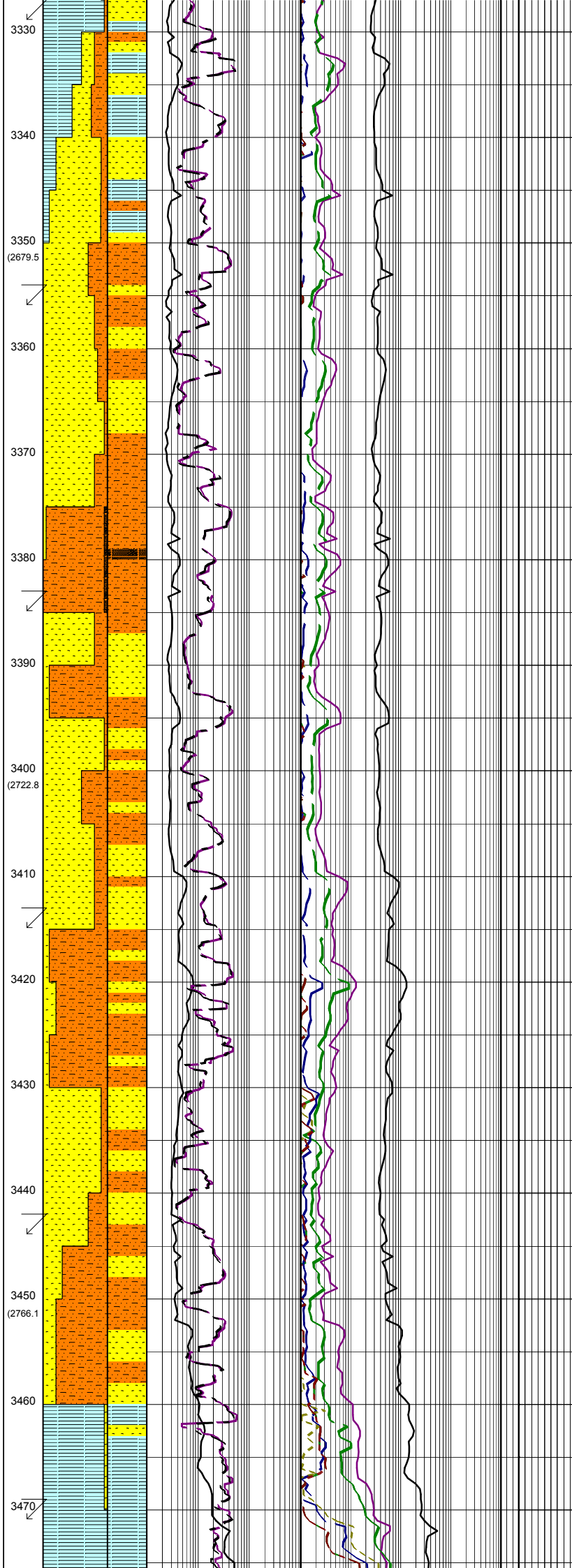
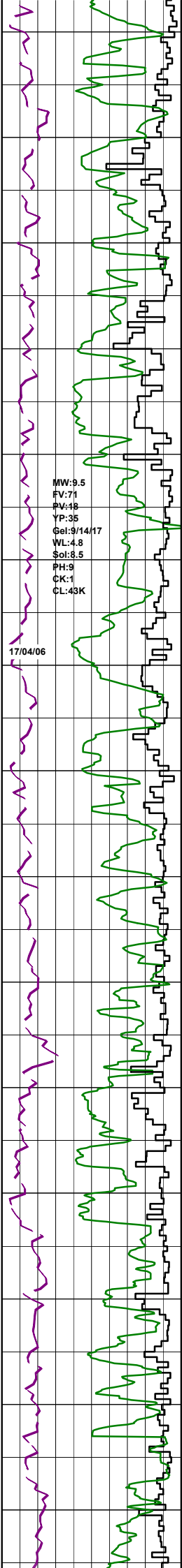
CLAYSTONE: med dk-dk gry, calc, tr glauc, tr carb spk, stly i/p, sft-fm, sbbiky-blky.

SILTY CLAYSTONE: lt-med dk gry, drk gry, calc, tr glauc, tr carb spk, vsft-fm, sbbiky-amor.

SILTSTONE: brn-dk brn, tr glauc, tr sand, sft, sbbiky.

SILTY CLAYSTONE: med-med dk gry, mott lt gry, calc, tr glauc, tr micmic, vsft-fm, sbbiky-amor.

Trip Gas



Survey @ 3328.7m: 29.86° 137.4Az

CLAYSTONE:lt gry-dk gry,tr
pry,tr micmic,tr glauc,tr carb spk,
vsft-fm,calc.sbbiky-amor.

SANDSTONE:trnsi-clr,f-med
occ crs,wl srt,sbang-sbrnd,lse,
fr inf por,no fluor.

SILTSTONE:brn-dk brn,occ tan
tr coal,tr pyr,sft-fm,sbfiss-
sbbiky.

Survey @ 3356.8m: 30.16° 137.4Az

ARGILLACEOUS SILTSTONE:med-dk
gry,brn-brnsh blk,ty pyr,tr glauc,
vsft-fm,sbbiky-blky.

SANDSTONE:trnsi-clr,f-crs,
occ vcrs,sbang-sbrnd,mod srt,
sft,tr carb spk,pr-fr vis por,pr-
fr inf por,no fluor.

ARGILLACEOUS SILTSTONE:lt-med
gry,brn-brnsh blk,ty pyr,tr glauc,
vsft-fm,sbbiky-amor.

COAL:blk,brn blk,dll-ea,brit,
tr fm,sbbiky,ang-uneven.

Survey @ 3385.4m: 29.85° 137.9Az

SANDSTONE:trnsi-clr,wh,yel,f-crs,
occ vcrs,sbang-sbrnd,mod srt,
sft,tr carb spk,gd inf por,no fluor.

ARGILLACEOUS SILTSTONE:lt-med
gry,grn gry,brnsh blk,ty pyr,tr glauc,
tr carb spk,vsft-fm,sbbiky-amor.

SANDSTONE:trnsi-clr,wh,yel,f-crs,
occ vcrs,sbang-sbrnd,sft,mod srt,
carb spk,gd inf por,no fluor.

Survey @ 3414.8m: 30.40° 138.0Az

ARGILLACEOUS SILTSTONE:lt-med
gry,grn gry,brnsh blk,ty pyr,tr glauc,
tr carb spk,vsft-fm,sbbiky-blky.

SANDSTONE:clr,trnsi,wh,yel,occ
dk gry,f-crs,occ crs,sbang-sbrnd,
mod srt,tr pyr,tr carb spk & lamn,
gd inf por.no fluor.

SANDSTONE:clr,trnsi,wh,yel,occ
dk gry,f-crs,occ crs,sbang-sbrnd,
mod srt,tr pyr,tr carb spk & lamn,
gd inf por.no fluor.

Survey @ 3443.5m: 30.09° 136.9Az

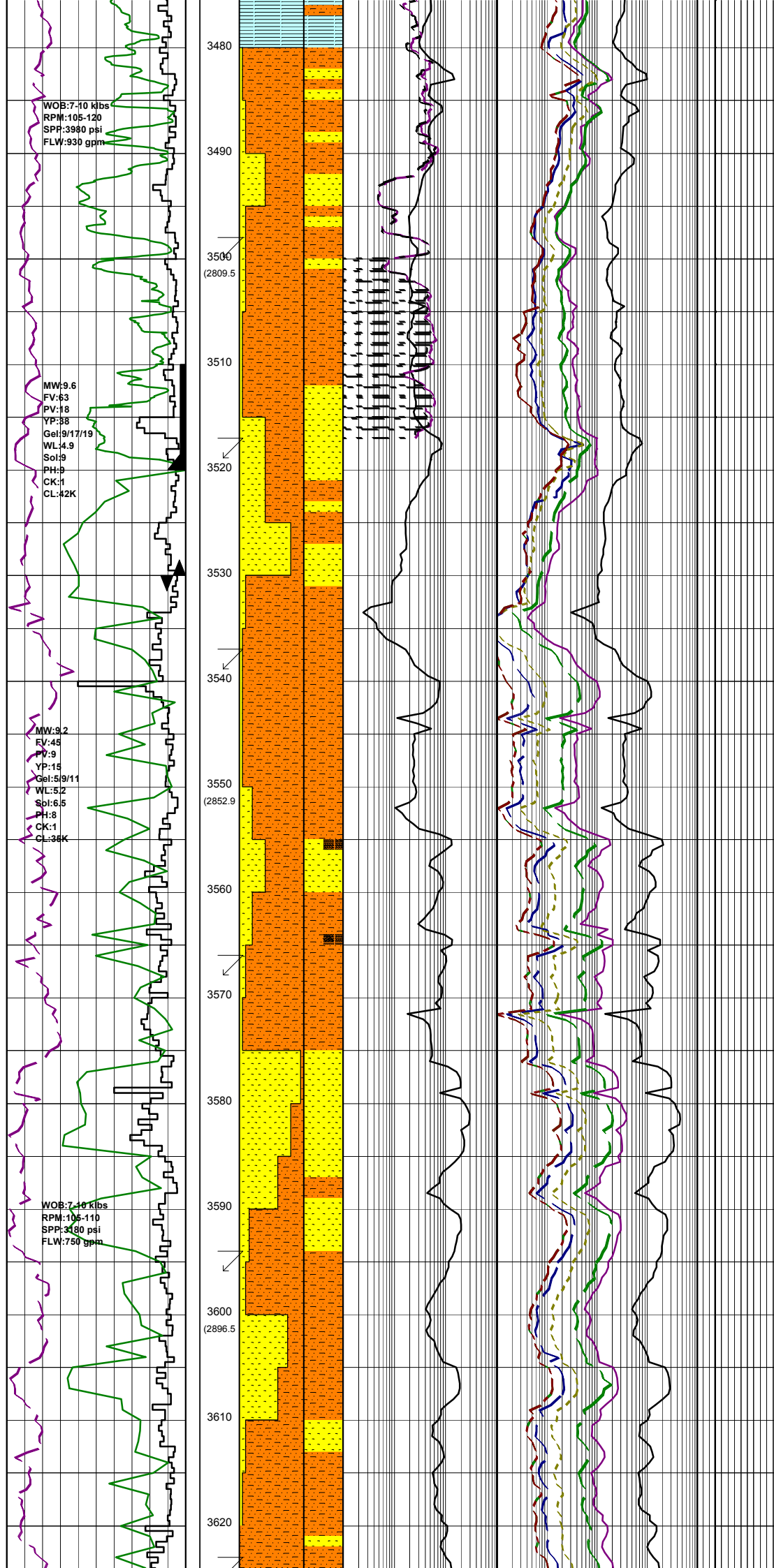
ARGILLACEOUS SILTSTONE:lt-med
gry,grn gry,brnsh blk,ty pyr,tr glauc,
tr carb spk,vsft-fm,sbbiky-blky.

SANDSTONE:clr,trnsi,wh,yel,occ
dk gry,f-crs,occ crs,sbang-sbrnd,
mod srt,tr pyr,tr carb spk & lamn,
gd inf por.no fluor.

SILTY CLAYSTONE:lt-med gry,lt
olv gry,grn gry,brnsh blk,calc,tr
glauc,tr pyr,sty l/p,sft-fm,tr carb
spk,sbbiky-blky,occ amor.

Survey @ 3471.6m: 29.56° 136.3Az

SILTY CLAYSTONE:lt-med gry,



tan, brn-blksh brn, tr micmic, tr C, tr crs sd, tr carb spk, vsft-fri, sbbly-amor.

ARGILLACEOUS SILTSTONE: lt-dk brn, lt-med dk gry, tr micmic, tr pyr, sft-mod fm, sbbly-amor.

SANDSTONE: clr-trnsl, vf-f occ crs, wl srt, sbang-sbrnd, lse, fr inf por, no fluor.

Survey @ 3500.7m: 29.51° 134.7Az

ARGILLACEOUS SILTSTONE: lt gry-med gry, lt brn-blksh brn, tr calc, tr micmic, tr dis pyr, sft-fri, sbbly-amor.

9 5/8" Casing Shoe set @ 3520.0m MDRT (2826.9 mTVD)

Survey @ 3519.0m: 29.52° 134.7Az

COAL: blk, brn blk, dll-ea, brit, tr fm, sbbly, ang-uneven.

SANDSTONE: wh, trnsl-clr, vf-med, occ crs, mod srt, sbang-sbrnd, lse, pr-fr inf por, no fluor.

TD FOR 12.25" HOLE REACHED ON 17/04/06 @ 19:00 HOURS

ARGILLACEOUS SILTSTONE: brnsh gry, brnsh blk, lt gry, tr calc, tr micmic, tr dis pyr, tr carb spk, sft-fri, sbbly-amor, contam cmt w/-20%.

BIT #7: Reed RSX162
SIZE: 216mm 8 1/2"
JETS: 6x15
IN: 3530m OUT: xxxm
RUN: xxxm HRS:
COND:

Survey @ 3538.4m: 30.37° 136.4Az

FIT @ 3533m EMW=13 ppg

SANDSTONE: clr, trnsl, wh, vf-f, rr med, pr srt, sbang-sbrnd, tr arg mt, lse, pr-fr inf por, no fluor.

ARGILLACEOUS SILTSTONE: lt gry-dk gry, lt olv gry, brnsh gry, occ brnsh blk, tr calc, tr pyr, tr carb spk & lamn, tr C, sft-fri, sbbly-blky.

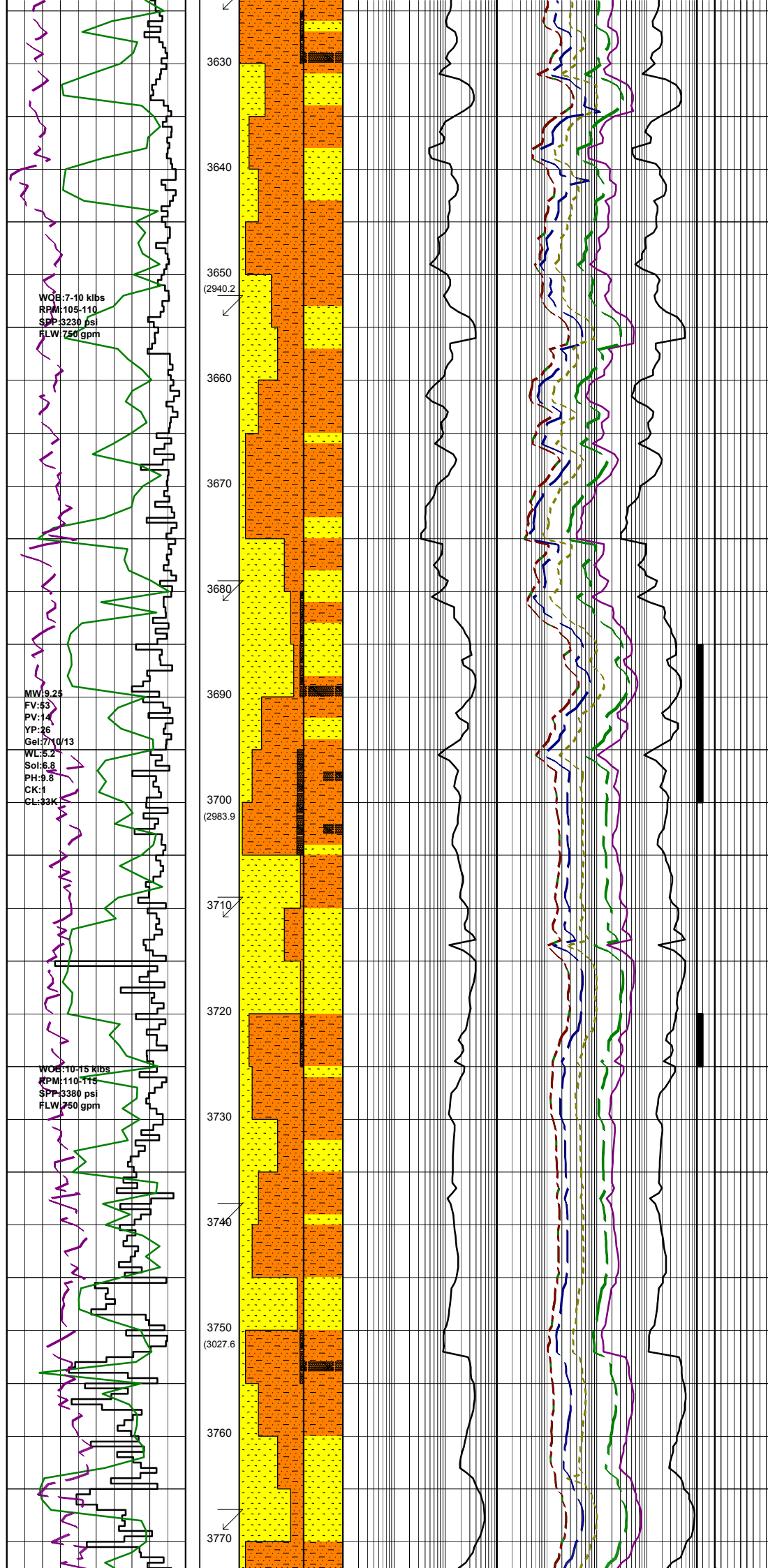
SANDSTONE: clr, trnsl, wh, med-crs, dom crs, mod srt, sbang-sbrnd, tr arg mt, tr pyr, lse, gd inf por, no fluor.

Survey @ 3596.4m: 29.56° 138.4Az

SILTSTONE: med dk-dk gry, brn-blk brn, arg i/p, tr glauc, tr carb spk, sbbly-amor.

SANDSTONE: clr-trnsl, vf-crs, occ vcrs, pr srt, sbang-sbrnd, tr kaol mt, tr pyr, lse, pr vis por, pr inf por, no fluor.

SILTSTONE: lt brn-brn, dk brn-blksh brn, tr pyr, vsft-fm, sbbly-blky.



Survey @ 3625.5m: 29.74° 138.2Az

COAL:dk brn-blk,dul-ea,blky,ang-uneven.

SANDSTONE:clr-trnsi,vf-crs,occ vcrs,pr srt,sbang-sbrnd,tr kaol mtx,tr pyr,lse,pr vis por,pr inf por,no fluor.

SILTSTONE:gry,brn-dk brn,blksh brn, arg i/p,tr pyr,vstf-fm,sbbiky-blky,occ amor.

Survey @ 3653.4m: 29.16° 138.5Az

SANDSTONE:clr-trnsi,wh,f-med,occ crs,mod srt,sbang-sbrnd,lse,fr inf por,no fluor.

SILTSTONE:lt gry-gry,lt brn-dk brn,blksh brn,arg i/p,tr pyr,tr micmic,tr carb spk,vstf-fm,sbbiky-blky,occ amor.

Survey @ 3681.8m: 29.22° 138.7Az

SANDSTONE:wh,trnsi-clr,vf-med,occ crs,ml srt,sbang-sbrnd,tr kaol mtx,tr pyr,lse,gd inf por,no fluor.

FLUOR:3685m-3690m;5-10%,mod bri yel wh,slw dl-fr blu wh solv cut,no r/r,no odour.

COAL:blk,brn blk,dll-ea,brit,tr fm,sbbiky,ang-uneven.

SILTSTONE:lt gry-gry,lt brn-dk brn,blksh brn,arg i/p,tr micmic,tr carb spk,vstf-fm,sbbiky-blky,occ amor,wk fluor.

Survey @ 3711m: 29.31° 137.0Az

SANDSTONE:wh,trnsi-clr,med-crs,dom med,mod srt,sbang-sbrnd,tr kaol mtx,tr pyr,lse,gd inf por,no fluor.

FLUOR:3720m-3725;10%,bri grn,pnpt slw cut,slw crsh cut r/r lt yel,thn.

SILTSTONE:lt gry-gry,lt brn-dk brn,blksh brn,arg i/p,tr micmic,tr carb spk,tr C,vstf-fm,sbbiky-blky,occ amor.

Survey @ 3740m: 29.00° 135.70Az

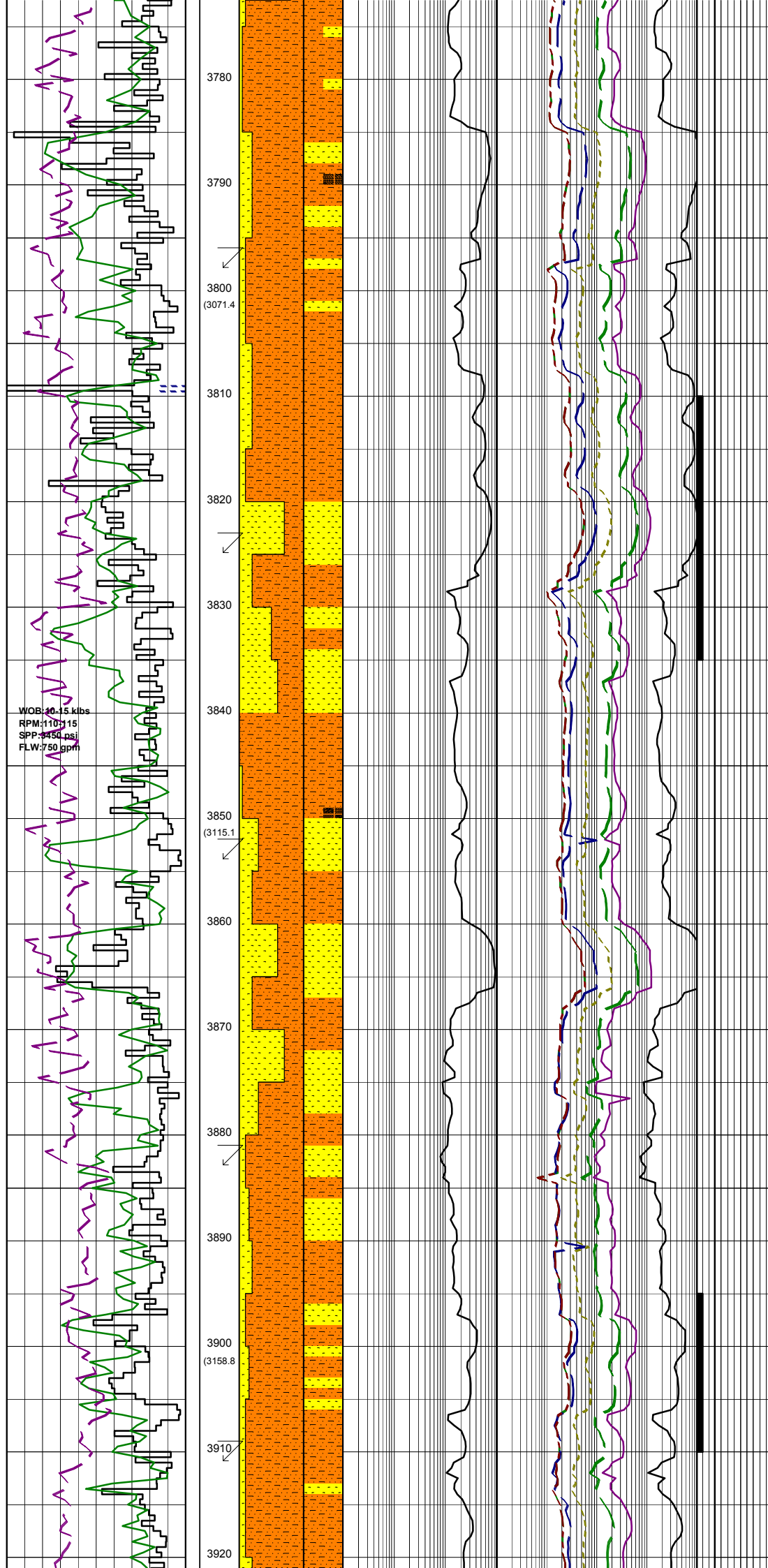
SANDSTONE:wh,trnsi-clr,med-crs,dom med,mod srt,sbang-sbrnd,tr kaol mtx,tr pyr,lse,gd inf por,no fluor.

COAL:blk,brn blk,dll-ea,brit,tr fm,sbbiky,ang-uneven.

SILTSTONE:lt gry-gry,lt brn-dk brn,blksh brn,arg i/p,tr micmic,tr carb spk,tr C,vstf-fm,sbbiky-blky,occ amor.

SANDSTONE:wh,trnsi-clr,med-crs,dom med,mod srt,sbrnd-ang,tr 5% arg mtx,tr pyr cmt,lse,gd inf por,no fluor.

Survey @ 3768.8m: 28.69° 134.7Az



SILTSTONE: lt gry-gry, lt brn-dk brn, blksh brn, arg i/p, tr pyr, tr carb spk, tr C, vsft-fm, sbbiky-blky, occ amor.

SANDSTONE: wh, trnsi-clr, lt gry, med-crs, dom med, mod srt, sbrnd -ang, tr 5% arg mtx, tr pyr, lse, gd inf por, no fluor.

Survey @ 3797.3m: 29.07° 134.7Az

SILTSTONE: lt gry-gry, lt brn-dk brn, blksh brn, arg i/p, tr pyr, tr carb spk, tr C, vsft-fm, sbbiky-blky, occ amor.

Survey @ 3825.6m: 29.02° 133.0 Az

SANDSTONE: wh, trnsi-clr, lt gry, sft-fri aggr, vf-f, dom f, occ med, pr-mod srt, sbang-rnd, tr 30% wh arg mtx, tr carb grn & lth, pr-fa vis por, fa inf por, occ pyr, no fluor.

FLUOR: 3815m-3835m; tr mod bri grn, pnpt v slw crsh cut, thn yel r/r.

SILTSTONE: lt gry-gry, lt brn-dk brn, blksh brn, arg i/p, tr pyr, tr carb spk, tr C, vsft-fm, sbbiky-blky, occ amor.

Survey @ 3853.6m: 28.92° 133.4 Az

SANDSTONE: wh, trnsi-clr, lt gry, sft-fri aggr, med-crs, occ med, mod-wl srt, sbang-rnd, tr 30% wh arg mtx, tr carb grn & lth, lse, pr-fa vis por, fa inf por, no fluor.

SILTSTONE: lt gry, dk gry, lt brn-dk brn, blksh brn, arg i/p, tr pyr, tr carb spk, tr C, vsft-fm, sbbiky-blky,

Survey @ 3882.5m: 29.05° 132.3 Az

FLUOR: 3895m-3910m; 2-5%, mod bri yel wh, slw dl-fr blu wh solv cut, no r/r, no odour.

STANDSTONE: clr-trnsi, vf-f, v wl srt, sbrnd-rnd, tr kaol mtx, lse, gd inf por, wk-vwk fluor.

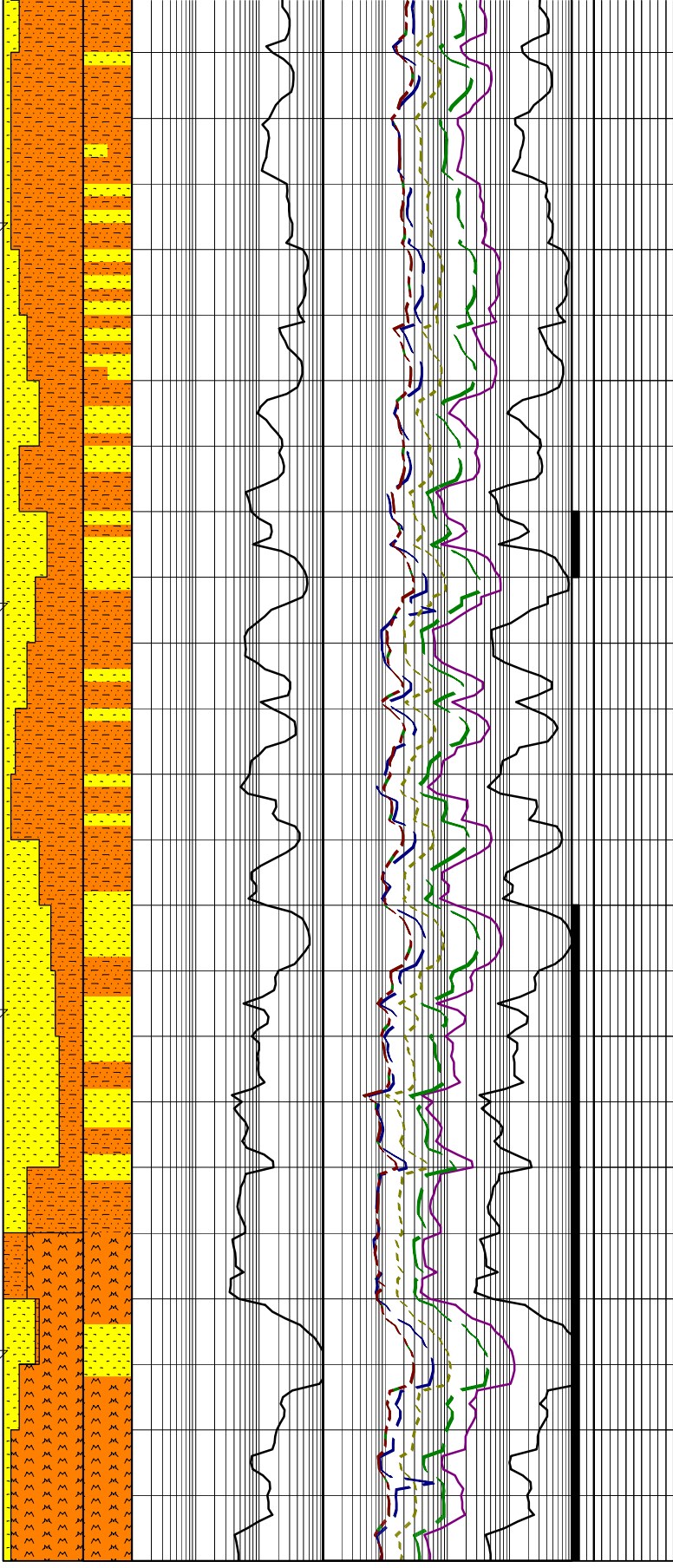
Survey @ 3911.8m: 28.92° 132.4 Az

SILTSTONE: lt gry-gry, lt brn-dk brn, blksh brn, arg i/p, tr carb spk, tr C, tr pyr, vsft-sft, occ fm, sbbiky-amor.

SILTSTONE: lt gry-med dk gry, lt brn-tan, dk brn-blksh brn, arg i/p,

WOB:15-20 klbs
RPM:110-115
SPP:3460 psi
FLW:752 gpm

3930
3940
3950
(3202.5)
3960
3970
3980
3990
4000
(3246.2)
4010
4020
4030
4040



tr carb spk, tr C, vsft-fm, sbbiky-biky, occ amor.

SANDSTONE:clr-trmsl,vf-f,
wl srt,sbrnd-rnd,kaol mtx,mod sft,
pr vis por,gd inf por.

Survey @ 3940.4m: 29.15° 131.7 Az

SILTSTONE:lt gry-med dk gry,
lt brn-tan,dk brn-blksh brn,arg i/p,
tr carb spk, tr C, tr pyr,vsft-fm,
sbbiky-biky.

SANDSTONE:trnsi-clr,vf-f occ
med,v wl srt,sbang-sbrnd, strg sil
cmt,pr vis por,fr inf por, tr wk
spk fluor.

FLUOR:3895m-3910m;2%,mod
bri yel wh,slw dl-fr blu wh solv
cut,no r/r,no odour.

Survey @ 3968.2m: 29.10° 130.9 Az

SILTSTONE:lt gry-med dk gry,
lt brn-tan,dk brn-blksh brn,arg i/p,
tr carb spk,vsft-fm,sbbiky-biky.

SANDSTONE:trnsi-clr,vf-f occ
med,v wl srt,sbang-sbrnd, strg sil
cmt,pr vis por,fr inf por,wk fluor.

FLUOR:3895m-3910m;5%,mod
bri yel wh,slw dl-fr blu wh solv
cut,no r/r,no odour.

Survey @ 3997.3m: 29.15° 129.9 Az

SANDSTONE:trnsi-clr,wh,dk gru,
f-med aggr,dom med,rr crs,mod wl
srt,sbang-sbrnd, tr sil cmt, tr arg
mtx, tr carb spk,fa vis por,gd inf
por,no fluor.

VOLCANIC:wh,grn/wh,vsft,rr
frm,weath-cly w/ f-med qtz,rr
relic xln tex containg f qtz &
Pyroxene,sil calc.

Survey @ 4026.7m: 29.21° 130.8 Az

SANDSTONE:clr-trmsl,rr orng
brn-gn grn,lse,f-med,sbrnd-ang,
wl srt, tr pyr,gd inf por.

VOLCANIC:wh,rr grn/wh,weath-cly,
f-med qtz,rr relic xln tex w/
Pyroxene,sil calc.